

Anti-FOLR1 hIgG1 Reference Antibody(Mirvebio)

Product Information

Product Name	Anti-FOLR1 hIgG1 Reference Antibody(Mirvebio)
Storage temp.	Store at 2-8°C short term (1-2 weeks).Store at $\leq -20^{\circ}\text{C}$ long term. Avoid repeated freeze-thaw.
Catalog# / Size	GM-86372MAB-1mg / 1 mg GM-86372MAB-5mg / 5 mg GM-86372MAB-25mg / 25 mg GM-86372MAB-50mg / 50 mg GM-86372MAB-100mg / 100 mg

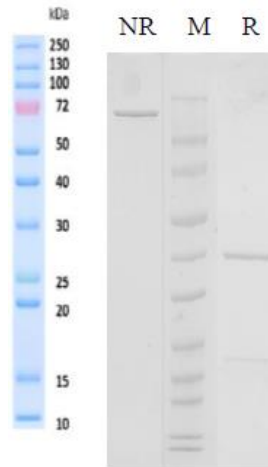
Antibody Information

Expression System	CHO
Aggregation	< 5% as determined by SEC-HPLC
Purity	> 95% as determined by SDS-PAGE
Endotoxin	< 1 EU/mg, determined by LAL gel clotting assay
Sterility	0.2 μm Filtered
Target	FOLR1
Clone	Mirvetuximab
Alternative Names	FBP, FOLR, FRalpha, NCFTD
Source/Isotype	Monoclonal Human IgG1 (KDEL, delta 447K), Kappa
Application	ELISA
Description	Folate receptor 1 (FOLR1), also known as folate receptor alpha and folate binding protein, is a glycosylphosphatidylinositol-linked protein, and is primarily expressed in tissues of epithelial origin. It is also expressed in kidney, lung and cerebellum. The secreted form is derived from the membrane-bound form either by cleavage of the GPI anchor, or/and by proteolysis catalyzed by a metalloprotease. FOLR1 binds to folate and reduced folic acid derivatives and mediates delivery of 5-methyltetrahydrofolate and folate analogs into the interior of cells. It has high affinity for folate and folic acid analogs at neutral pH. Exposure to slightly acidic pH after receptor endocytosis triggers a conformation change that strongly reduces its affinity for folates and mediates their release. It is required for normal embryonic development and normal cell proliferation.
Formulation	phosphate-buffered solution, pH 7.4.

Version:1.1 Revision Date:03/07/2024

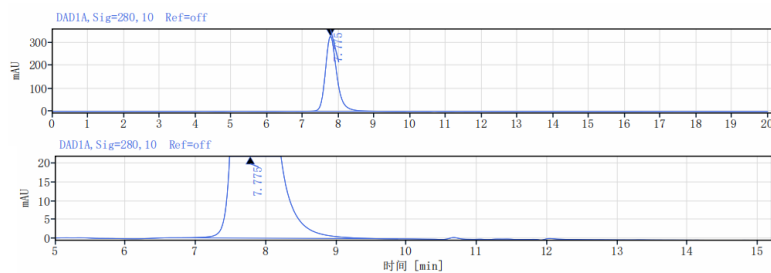
Data Examples

SDS-PAGE



On SDS-PAGE under reducing (R)/non-reducing(N-R) condition. The gel was stained overnight with Coomassie Blue. The purity of the protein is greater than 95%.

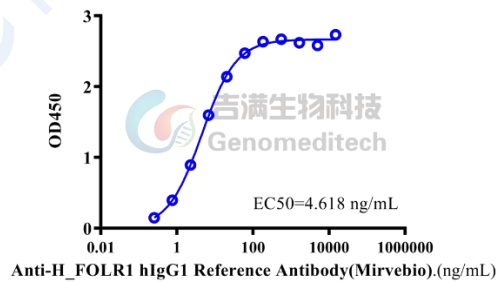
SEC-HPLC



The purity of this product is more than 95% verified by SEC-HPLC

Indirect ELISA

Anti-H_FOLR1 hIgG1 Reference Antibody(Mirvebio), ELISA
 0.1 μ g Human FOLR1 Protein; His Tag of per well



Human FOLR1 Protein; His Tag (Catalog # GM-84314RP) was immobilized at 1 μ g/ml (100 μ L/well). Increasing concentrations of Anti-FOLR1 hIgG1 Reference Antibody(Mirvebio) (Catalog # GM-86372MAB) were added.